



Agri
CareTrade

**EXPERTS IN HYGIENE,
HOOF CARE & NUTRITION**



HYGIENE | HOOF-CARE | NUTRITION

Sixth Edition

An S&E CareTrade Company

Welcome & Introduction



Over 40 years ago, S&E CareTrade set out to offer a great product range at highly competitive prices, all backed by a focus on providing the best customer care and technical support possible. Today, we continue to work tirelessly to make life as easy as possible for our customers.

Working with you to achieve the highest standards possible

We are one of the fastest growing dairy hygiene specialists in Ireland, dedicated to the very latest products and solutions, all backed by an unwavering focus on the very best customer service possible.

Making your life easier

We only offer the very best products available and our considerable stock holding enables us to provide prompt and efficient delivery when and where suits you.

Please get in touch to find out how we can help

We trust you find this brochure helpful and informative, and we look forward to growing our relationship with you.

Tim Hughes
Managing Director

CALL US:
NI: **028 9446 2266**
ROI: **01 699 1533**
or email: **sales@agricaretrade.com**



for more products visit:
www.agricaretrade.com



Contents

3	Meet the Team / Our Values
5	Mastitis Management
9	Pre-Dipping
11	Post-Dipping
15	Parlour Equipment, Cleaning & Hygiene
16	Robotic Milking
17	Barn, Parlour & Equipment Hygiene
18	Cubicle Hygiene
19	Calving Areas & Pen Hygiene
21	Skin & Hoof Care
24	Yeast & Microbiology
34	Slurry Treatment
35	Calf Nutrition & Jackets
37	Silage Treatment
39	Oils & Greases
40	Consumables
43	Fencing
45	Rodent Killer
46	Handcare
47	Waterproofs & Wellies
49	Top Tips for Managing Mastitis & Improving Milk Quality
50	Our Green Credentials

Meet the Team



Tim Hughes
Managing Director
Tel: +44 (0) 28 9446 2233



Adrian Hughes
Director
Tel: +44 (0) 7848 454026



Ben Glass
Operations Manager
Tel: +44 (0) 7788 309 940



Derek Patterson
Farm Consultant
Tel: +44 (0) 7848 003 069



Claire McConnell
Farm Consultant
Tel: +44 (0) 07727 247 999



Tommy Cooke
Warehouse & Distribution
Tel: +44 (0) 28 9446 2266

Call today to discuss how we can help you improve milk yields, quality & animal welfare.

Tel. +44 (0)28 9446 2266

Weekly Deliveries



Our Values:

What's important to us - Providing value in everything we do!



What our customers are saying:

"I was sceptical about using the PURE-FOAM SYSTEM, but having tried it I would recommend it to anyone."
Stephen McCammond

"It's a pleasure working with the Agri Care Trade team, nothing is ever too much trouble and they work hard to always understand what's important to us."
Danielle McKendry

"The new foaming system makes pre-dipping a lot quicker and it is clearly having a positive effect."
Morrell McCollum

"I am really pleased with Slurry Cell, the bacteriological slurry treatment & would recommend it to anyone."
Robin Stirling

For all the latest news and updates, follow us on Facebook: [/AgriCareTrade](https://www.facebook.com/AgriCareTrade)

What is Mastitis?

The importance of dealing with infection



Of the three major dairy herd problems, Mastitis, Fertility and Lameness, it's Mastitis that costs the most; anything from £70 to £350/per annum per cow.

MASTITIS

Mastitis is an inflammation of the mammary gland associated with bacterial infection.

It is caused by pathogenic micro-organisms that enter the udder through the teat canal, damaging the mammary tissue. This causes increased vascular permeability, changing the composition of the milk cell count & quality.

The two types of Mastitis:

Clinical Mastitis

An inflammatory response to infection causing visibly abnormal milk (in terms of colour, fibrin clots etc.). As the inflammation increases, changes in the udder occur including swelling, an increase in temperature, redness, and blotches. The animal suffers increased pain.



"Mint cream available to sooth and cool inflamed udders."
(500ml & 2.5 litres)

Sub-Clinical Mastitis

This type carries no visible signs of infection, and is the most common form.

As a result, detection is best achieved by examining the milk for somatic cell count using the California Mastitis Test or an automated method. Somatic cell counts positively correlate with the presence of infection.

Cows with a cell count of >280,000 cells/ml are more than 80% likely to be infected. Similarly, the higher the cell count in a bulk tank, the more likely there is an infection in the herd.



Cows are at risk of Mastitis

- ✓ During milking - if teat preparation prior to milking has been limited or non-existent.
- ✓ After milking - if the teat sphincters remain open and the cow lies down in a dirty area.
- ✓ During "dry" periods.

Mastitis Detection & Management

We strongly recommend all dairy farmers sign up to milk recording, as a high somatic cell count is an indication of Mastitis. Alternatively, spot checks for small samples can be taken using the California Milk Test.

The Diagnostic Kenotest



Rapidly detects early signs of Subclinical Mastitis. Using the CMT method and a specially designed test-pallet, it assesses the level of somatic cells present in the milk.

Available in 1L quantities

Fore-stripping is also a useful way of identifying abnormal milk before it is added to the bulk tank. Ideally it is drawn onto a dark surface to make changes in the milk more visible.



Once milk recording is underway, quality analysis of the results is critical. Many vets offer this service, or Agri CareTrade can assist with details of a Mastitis Management Programme.

Don't forget the importance of Teat Skin Condition!

Teat skin condition is a key part of any Mastitis Management Programme. Chapped and cracked teats encourage the development of bacteria. Germs like Staphylococcus aureus or Streptococcus agalactiae thrive in these warm, humid and nutrient rich conditions.

The five types of teat condition



Teat skin is severely damaged and ulcerative with scabs or open lesions. Large and/or numerous warts, which interfere with teat end function.



Score 5



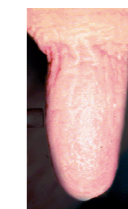
Teat skin is chapped and cracked, indicating inflammation is present. Numerous warts may be present.

Score 4



Teat skin is chapped. Some small warts may be present.

Score 3



Teat skin shows some evidence of scaling.

Score 2



Teat skin is smooth, free from scales, cracks or chapping.

Score 1



Order your Pure Foamer & Pure Dipper today!

Give your cows the best treatment with our Pre- & Post Automatic Dipping Solutions.

- ✓ Economical
- ✓ Perfect coverage
- ✓ Complete range of teat dips available
- ✓ Closes the teat canal thanks to adequate viscosity
- ✓ The strong colour of the liquid ensures coverage can be seen
- ✓ High % emollients for healthy skin and teat ends
- ✓ No residue in the milk

**30-DAY
FREE TRIAL**



Prevention is better than cure when it comes to Mastitis!

We know that annually Mastitis can affect up to 50% of the herd, costing upwards of £350 per cow for treatment alone. But, that's not all, other associated losses include:

- ✓ reduced yield from previously affected cows
- ✓ discarded milk
- ✓ increased penalties for higher somatic cell counts
- ✓ the risk of relapse & increased likelihood of other health issues including lameness, ketosis & impaired fertility
- ✓ heightened risk of culling

Cows are most at risk of developing Mastitis **during and immediately after milking**. By introducing pre-dip and post-dip you can dramatically reduce the occurrence of Mastitis.



- 1. Use a pre-dip to clean, disinfect and condition the teat before milking to prevent Mastitis, avoid contamination and encourage the release of milk.** A high-quality pre-dip solution kills teat bacteria, protecting the teat canal during milking. Remember, all bacteria not removed from the teats before milking will end up in the milk tank!
- 2. Apply a post-dip teat solution immediately after milking to condition and disinfect the teat until it closes.** The teat canal is the primary physical and chemical barrier to invasion of Mastitis pathogens into the udder. The sphincter can stay open up to 2 hours post-milking, so it is vitally important to protect the teat against environmental bacteria when the risk of contamination is highest after milking.

Is Mastitis a problem for you?

We can help you calculate the cost of Mastitis on your farm and minimise it!



Ask us about a **FREE** 30-day trial of the Pure Foamer and/or Pure Dipper.

Mastitis can cost upwards of **+£350 per annum per cow** for treatment alone.

Other associated costs include:

Increased risk of repeated cases of mastitis	Greater susceptibility to developing other health issues that are related to mastitis, including: <ul style="list-style-type: none"> • Lameness • Ketosis • Impaired fertility • Calves born in a weakened state 	Discarded milk
Cost of feed provided during the infection and treatment interval		Reduced milk yield, which can be calculated for the rest of its lactation period or maybe the rest of its life
Damage caused to the structure of the udder	Decreased quality of milk	Loss of value if cow has to be culled

CAN YOU AFFORD THIS?

Pre-Dipping

WHY PRE-DIP?

Quicker

Simply, pre-dipping can dramatically improve your milking routine. The two graphs illustrate how pre-dipping reduces milking times.

Graph 1 – standard milking practice; the cluster is attached to teats and between 60 to 90 seconds later the main milk draw commences

Graph 2 – when applying Keno-Pure using the Pure-Foamer, the teat is stimulated and the cluster is then attached, ideally within 90 seconds and the “let down” is significantly faster, thereby reducing the cluster “on time”

1 minute of preparation reduces the milking time by up to 2 minutes⁽¹⁾.

There are many ways to prepare a cow before milking, including re-useable cloths, spraying & dipping cups.

Research shows that cloths increase the risk of cross contamination, whilst spraying is often inaccurate and wasteful; dramatically increasing the amount of solution required.

Pre-dipping is the most effective teat preparation as the foam is applied only to the teat. This avoids contamination of the teat end by water borne dirt.

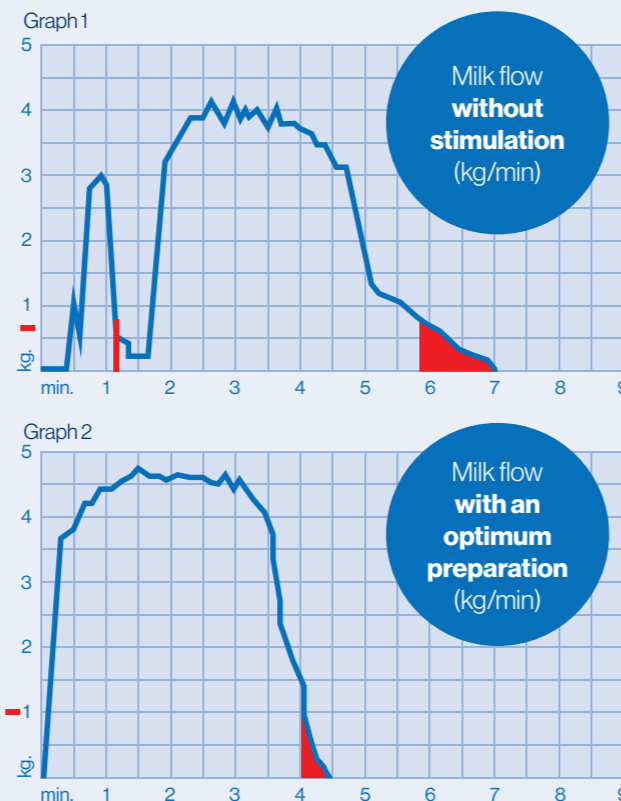
Using a foaming dip cup is an effective but labour intensive approach. The Pure-Foamer overcomes these issues, minimising the risks of carpal tunnel, repetitive strain injury and potentially even arthritis, taking teat preparation to the next level.

Cleaner - Better Quality Milk

The process using the Pure-Foamer was assessed using the TEAT CLEANLINESS SCORING CHART. 91.6% of the teats scored 1 (free of dirt) or 2 (slight dirt). An added benefit is reduced Bacto Count/Total Bacterial Count⁽²⁾.

Complete

Correct preparation will optimise milk release and maximise volumes.



"The red areas represent periods when low milk flow significantly increases the risk of bacteria entering the teat."



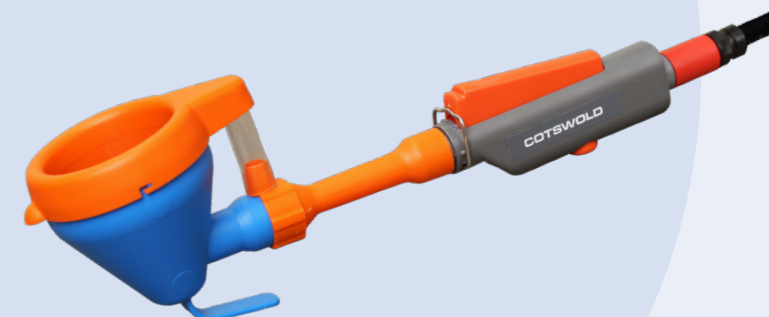
(1) Source: Precision Milking; DVM Dan Humphries & DVM Tom Greenham
 (2) Source: University of Ghent.

Pre-Dipping

10

Cleaning and sanitising the teats before milking is critical, particularly where cows share the milking equipment and the risk of contamination is high.

Kenopure Foaming PRE-DIP



HIGHLY EFFECTIVE

The perfect partner for your PURE FOAMER

- ✓ VMD registered (EN1656) medicinal pre-dip
- ✓ Fast acting disinfection within 30 seconds
- ✓ Concentrated lactic acid based
- ✓ Contains Glycerine and Eucalyptus oil for improved teat conditioning
- ✓ Highly cost effective

Benefits to the Cow:

Kenopure offers the gold standard in both teat cleaning and moisturising. It's a proven disinfectant and is economical to use, given the low concentration levels required.

Use Kenopure with the Pure Foaming System to enhance your milking routine, reducing time and costs.

Available in 10L, 25L and 200L barrels (ready-to-use)

SCAN TO SEE THE PURE FOAMER IN ACTION



Post-Dipping

MEDICINAL TEAT DIPS

The very best dips condition and disinfect the teat by covering it in a thick viscose layer, protecting it until it closes.

Research by the National Mastitis Council has shown that intra mammary infection can be reduced by 50% compared with no disinfectant being applied. The disinfectants do not treat existing mammary gland infections, but will restrict or reduce the colonisation of the teat duct.

Kenostart



3mg/g iodine.
Teat Dip Solution
for dairy cattle

An iodine based teat dip, used as a key component of any Mastitis Management Programme and registered for use in 13 countries.

Available in 20L and 200L quantities

Kenostart Spray & Dip



3mg/g iodine.
Teat Dip or Spray
Solution for
dairy cattle.

Kenostart Spray & Dip is a sprayable iodine teat dip, registered in 15 countries across Europe. It adheres to the skin without blocking automatic spraying systems. Kenostart Spray & Dip has excellent disinfecting and conditioning properties.

Available in 20L and 200L quantities

Kenocidin



Chlorhexidine digluconate 5mg/g
Teat Dip Solution
for dairy cattle.

Kenocidin (with 12% emollients) is the best solution available to enhance teat condition.

- ✓ Kenocidin reduces the risk of Mastitis in lactating cows
- ✓ Helps to maintain excellent teat condition
- ✓ Barrier forming properties
- ✓ Successfully tested on all major types of mastitis
- ✓ Chlorhexidine based with Menthae Arvensis

Available in 20L and 200L quantities

Kenocidin Spray & Dip



Chlorhexidine Diguconate 5.0mg/g,
Teat Spray Solution
for dairy cattle.

- ✓ Chlorhexidine based
- ✓ Registered in 23 countries
- ✓ Guarantees optimal disinfection and teat conditioning

Available in 20L and 200L quantities

Post-Dipping

BIOCIDAL TEAT DIPS

The risk of contamination following milking is high as the sphincter can stay open, typically for up to an hour. It's the teat canal that keeps Mastitis Pathogens out. A teat-end in top condition is important as it restricts colonisation of the mammary gland.

- ✓ Easy to apply
- ✓ Fast acting against Staphylococcus, Streptococcus Uberis and E-Coli
- ✓ Gentle on the udder and skin
- ✓ The distinctive green protective film ensures all targeted areas are covered
- ✓ Long lasting – 26 days after mixing

Kenomix



Strongest
Disinfectant
Available

A post-milking teat dip for teat disinfection and protection. Kenomix is a powerful and long lasting Chlorine Dioxide (CLO2 based) teat dip. The solution is mixed with the new formula Activator on-site; all you need to do is shake the solution.

Available in a 4.75L drum (plus 250ml activator) or a 19L drum (plus 1L activator)



Kenomix SD



Kenomix SD is the spray-version of KenoMix.

✓ **NB: The mixed solution will remain active for 26 days.**

Available in 19L (plus 1L activator) quantities

Mint Cream



Based on 33% of Japanese mint oil, Mint Cream is a gentle cream for applying to the udder. Designed for easy massage and absorption. Japanese mint oil is widely used in veterinary and human medicines for its soothing and cooling effect. It helps to improve udder health by activating blood circulation. Easily hung in the milking parlour.

Available in 500ml and 2.5L quantities

Pure Dipper

Dipping is best. Automatic Dipping is even Better!

- Exceptional teat coverage
- No more cup filling
- Minimal waste
- 100% safe for the milker

The teat canal is the primary physical and chemical barrier to invasion of Mastitis pathogens into the udder. The risk of contamination is highest after milking, as the sphincter can stay open up to 2 hours post-milking.

Post-milking teat disinfection is one of the key pillars in reducing Mastitis on Dairy farms by encouraging sphincter closure, to avoid bacterial colonisation of the mammary gland.



CID LINES

Spraying	vs	Dipping
<ul style="list-style-type: none"> • Wasteful • Less-viscous to allow for easy spray via the nozzle. 		<ul style="list-style-type: none"> • Economical • Higher viscosity to allow the solution to stick to the teat and pool at the teat end without drip.

"The system was **installed quickly** and was very easy to get used-to. There is now **no need to replenish dipping cups** which **saves time and wasted product** in the decanting process. The reduction in waste when filling cups, added to the fact that the **Pure Dipper uses less product**, means that we are saving around 10% in product and what is used is being applied where it's needed.

...and because the dipping head is at the end of the handle, the operator is further back and their hands are not directly under the udder. Previously, dip cups would quite often be knocked out of our hands which risked contamination and damage to the cup and the risk of injury when trying to retrieve the cup. Those problems have disappeared.

The Pure Dipper is much **easier to clean** than the cups and has the benefit of being hung on a fixed point away from the cow. This means that not only is it less likely to get dirty, but we can keep it cleaner due to the design. We are extremely pleased with the Pure Dipper and will continue to use it in our parlour".

Nick Maynard

Contact us today for a free 30-day trial:

- ☎ **+44 (0)28 9446 2266**
- ✉ **sales@agricaretrade.com**
- 🌐 **www.agricaretrade.com**



Ready-to-use for both pre- and post- teat dip applications

- **Lactic-acid & Chlorhexidine formulation for biocidal effect**
- **Foam Dip or Spray**
- **Enhanced colour for easy visibility**
- **High level of emollients**
- **Conditions and protects teats**

Available in 200L & 1000L IBC

Directions for use: Before milking, immediately apply to the full length of each teat, leave for 30 seconds and wipe off thoroughly. After milking, immediately apply to the full length of each teat.



Parlour Equipment

Cleaning & Hygiene

Where milk comes into contact with your milking and cooling equipment, contamination and high bacterial counts can persist.

A simple, and inexpensive cleaning routine can eliminate this source of contamination.

Peracetic Acid

Active stabilised peracetic acid.

- ✓ Final rinse
- ✓ Cluster spraying
- ✓ Cluster flushing (automatic system)



Available in 25kg & 220kg quantities

DM Cid Pho Cid

The CID Lines range is a proven market leader, offering the future in cleaning.



- ✓ **DM Cid** - alkaline chlorinated cleaner and disinfection. For elimination of grease and proteins.
- ✓ **Pho Cid** - acid cleaner and descaler (for use in tandem with DM CID) for the removal of calcium and iron deposits. Suitable for periodical or daily acid cleansing. Pre-rinse with lukewarm water. Circulate for 8-15mins and rinse with clean water.

All available in 25kg and 240kg quantities

Did you know?

We offer an extensive hygiene audit, targeting the areas you wish to improve. We will recommend the use of appropriate chemicals from the extensive CIDLines range. These include traditional detergents, a unique CHLORINE-FREE range and products suited to ROBOT Milking.

QACs-free Cleaning & Disinfection

All of these circulation cleaners are free from quaternary ammonium compounds & kill thermophilic bacterium.

The unique CHLORINE-FREE range

Demand for CHLORINE-FREE products is increasing dramatically and the DM Cid Ultra range is the ideal solution:



DM Clean Super

- ✓ Strong alkaline cleaner
- ✓ Non-foaming



DM Cid Ultra

- ✓ Alkaline cleaning and disinfecting



Pho Cid D Pro

- ✓ Dual acidic product for cleaning and disinfecting bulk tanks.
- ✓ Free of phosphates, sulphates and nitrates.

All available in 25kg and 240kg quantities

Robotic Milking

Whilst Robotic Milking Systems have grown dramatically in popularity, driven mostly by increased productivity, greater flexibility, improved animal well-being and reduced labour, dairy hygiene remains critical. The CIDLINES range of robotic system chemicals are a pivotal part of the process.



DM Clean R

DM Clean R can be used for the chlorine-free flow through cleaning of milking robots at high temperature.

- ✓ Strong alkaline cleaner
- ✓ Non-foaming
- ✓ Safe at high temperatures

Available in 25kg and 240kg quantities



Pho Cid R

An acid cleaning agent for descaling milking robots at high temperatures.

- ✓ Contains Citric Acid Monohydrate and Phosphoric Acid
- ✓ Safe at high temperatures

Available in 22kg and 240kg quantities



Pulver A

Chlorine-free Cold Wash Powder. Specifically formulated for circulation cleaning of pipeline milking plants. Ideal for hard water areas.

- ✓ Very low dilution rate
- ✓ Maximum sterilisation effect
- ✓ Non-corrosive on building equipment

Available in 20kg



DM Cid P

Chlorinated powder cleaner for milking machines with corrosion inhibitors & sequestrants.

- ✓ Suitable for all water types
- ✓ Use at a rate 2.5g to 5g per litre.

Available in 25kg

Barn, Parlour & Equipment Hygiene

The parlour is constantly in use and keeping surfaces clear of pathogens is imperative. Expert advice suggests that the parlour should be rinsed daily with water and cleaned with detergent & then disinfected weekly. Robotic parlours tend to become dirtier and may need cleaning every two days.

Kenosan

Kenosan is both "ultra" adhesive and penetrates/disperses ingrained dirt, ground in manure and the most heavily soiled areas, even at very low dilutions.



- ✓ It's unmatched adhesion and revolutionary sticky foam, ensure extended contact time, reducing time, effort and excessive use of water.
- ✓ 1-2% dilution rate
- ✓ Safely apply on all surfaces and in all environments

Available in 22kg quantities

Virocid

A highly-concentrated disinfectant with 4 active ingredients.



Proven record in combating key diseases:

- Foot & Mouth
- Influenza
- Bovine Enterovirus
- Mycoplasma
- Vesicular Stomatitis Virus
- Bovine Virus Diarrhea
- Brucella Abortus etc.

- ✓ Virocid also controls foodborne zoonoses, including: Campylobacter, E.Coli and Salmonella at low dilutions (0.25 to 0.5%)
- ✓ Virocid can be sprayed, hot-fogged or applied as a foam. It has a long residual action.
- ✓ Virocid sprayed at 0.5% (1:200)-0.0019ppm/
Virocid foamed at 0.5% (1:200)-0.0016ppm

Available in 20L quantities

Biosafe



The multi-purpose vehicle and equipment cleaner.



A highly effective, non-corrosive cleaner designed for vehicles, farm equipment and sensitive metallic surfaces such as aluminium, copper and zinc.

- ✓ Safe
- ✓ Protects and cleans
- ✓ Fast-rinsing
- ✓ Apply using a high-pressure foaming lance with cold water

Available in 20L quantities

Foaming Lance

Kenosan, Virocid and Biosafe are all best applied using our lance.



- ✓ Highly accurate dilution control – proven to reduce usage.
- ✓ Supplied with easy to use dilution chart.
- ✓ Easy to set up and fits just about all pressure washers.
- ✓ Replacement bottles are available.

Capacity: 2L

Cubicle Hygiene

Dry cubicle conditions dramatically reduce the moist and warm conditions in which bacteria thrive, helping to manage the incidence of Mastitis.

Kenolit



A highly absorbent organic powder designed to keep bedding ultra-dry. Kenolit also keeps teat skin and teat ends in the best possible condition. It is a non-irritant, which is perfect for calves.

- ✓ Ready to use with high drying capacity.
- ✓ Ecologically safe & phosphate free.
- ✓ Reduces the production of ammonia.
- ✓ Non-corrosive and safe for all animals and skin types.
- ✓ Creates a less attractive environment for flies.
- ✓ Non-irritating aroma for both humans and animals.
- ✓ Contains no organic matter, avoiding the creation of a favourable environment for bacterial growth.

Available in 25kg bags

Hydramix Lime

Multi-application natural lime is ideal for use in cow cubicles, poultry and stock sheds or in small paddocks and for horticultural applications.

Increase yields by promoting improved hygiene and healthier livestock. Nadins Hydramix Lime controls E-Coli, and helps to prevent Mastitis and Digital Mastitis. Non-burn, it can be disposed of directly in slurry.

- ✓ Highly absorbent
- ✓ Free flowing
- ✓ Assists odour control
- ✓ Creates non-slip surfaces reducing the risk of injury to livestock
- ✓ Low dust levels

Available in 25kg damp proof polythene bags or 1,000kg tote bags



"See Page 42 for brushes, and gloves."

Calving Areas & Pen Hygiene

CALF PEN HYGIENE - Cryptosporidiosis & Coccidiosis Prevention

Calf pneumonia and calf scours cost the dairy sector many millions every year. Whether it be death, reduced feed conversion or limited growth, the costs of veterinary treatment will quickly add up.

Kenocox reduces Neonatal Calf Diarrhoea, particularly in the critical early days after birth. It is particularly effective combatting the spread of NCD where young animals are in close confinement.



Kenocox

Kenocox is a broad-spectrum disinfectant highly effective against endoparasites.

- ✓ Kills the sporulated and unsporulated forms of the crypto oocyst at 2% dilution
- ✓ Kills coccidiosis at 4% dilution
- ✓ Bacteria – Pseudomonas Aeruginosa, Staphylococcus Aureus and Proteus Vulgaris
- ✓ Works safely on all surfaces - non-corrosive
- ✓ Phenol-FREE – safe for humans and animals

Available in 1L and 10L quantities

Kenosan

Kenosan is both “ultra” adhesive and penetrates/disperses ingrained dirt, ground in manure and the most heavily soiled areas, even at very low dilutions.

- ✓ It's unmatched adhesion and revolutionary sticky foam, ensure extended contact time, reducing time, effort and excessive use of water.
- ✓ 1-2% dilution rate
- ✓ Safely apply on all surfaces and in all environments

Available in quantities of 22kg

Foaming Lance

Kenocox is best applied using our lance:

- ✓ Highly accurate dilution control – proven to reduce usage
- ✓ Supplied with easy-to-use dilution chart
- ✓ Easy to set up and fits just about all pressure washers
- ✓ Replacement 2L dilution bottles available

Calf Hut Hygiene

CLEANING PROTOCOL

1 Remove All Removable Equipment

- ✓ Take away all the removable equipment (buckets etc.) and clean and disinfect them according the protocol described below.
- ✓ Goal: no recontamination when cleaning the room itself.



2 Dry Cleaning

- ✓ Removal of manure, litter, feed residues.
- ✓ Goal: increases efficacy of the main cleaning.



3 Apply Detergent

- ✓ Foam with 1.5% KENOSAN, allow 0.3Ltr solution/m².
- ✓ Minimum 30 minutes contact time.
- ✓ Goal: decreases time and increases efficacy of main cleaning.



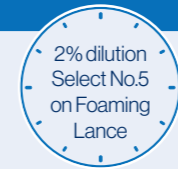
4 Main Cleaning

- ✓ High pressure: mechanical cleaning (50-150 bar and 12-30 Ltrs/min.)
- ✓ All surfaces: walls, floors, feeders and ceiling.
- ✓ Leave to dry.



5 Anti Parasitic Disinfection

- ✓ Spray or foam with KENOCOX, allowing 0.4Ltr solution/m².
- ✓ Minimum 2 hours contact time.
- ✓ Rinse buckets before re-using.



DigiFoot

CZ Hoof Cream & Footbath Solution



Digital Dermatitis in a dairy cow



Results after 3 days with 1 application



Results after 5 days with 2 treatments, wound healed.

Treats Digital Dermatitis and Footrot in cattle, Granuloma (strawberry foot), foot abscess, Whiteline and Shelly Hoof, Footrot (Dichelobacter Nodosus) and CODD (Contagious Ovine Digital Dermatitis) in sheep.

Four easy to follow steps:

1. Clean the wound thoroughly, apply the cream liberally and bandage.
2. Leave for 2-3 days.
3. Check on the wound, clean thoroughly, re-apply and repeat.
4. For the severest of cases, repeat a third time.



- ✓ Aids healing of wounds & infections
- ✓ Contains no QACs or antibiotics

CZ Hoof Cream available in 500g



- ✓ Disinfectant and hardener
- ✓ Highly effective for the treatment of foot rot, especially in wet weather conditions.
- ✓ Suitable in manual and automatic foot baths.

Footbath Solution available in 25kg, 220kg, 1100kg IBC

PRODUCT FOR HOOF CARE AND HYGIENE FOR COWS, SHEEP & GOATS

Skin & Hoof Care

HOOF HYGIENE

Promoting the very healthiest claws

After Mastitis and Reproductive Failure, Lameness is the 3rd biggest issue for many farmers.

The associated financial loss is significant and may include the cost of treatment, reduced milk yield, an extended reproductive cycle and potentially increased culling.

The incidence of lameness has increased steadily over the past 20 years, with over 50% of animals suffering lameness at least once a year on many farms.

Contributory factors include:

- ✓ Increasing confinement on harder, wetter, more abrasive floors.
- ✓ Conditions which are not conducive to sufficient rest.
- ✓ Exposure of hooves to wet/damp manure.
- ✓ Poor nutritional management which encourages Rumen Acidosis.
- ✓ Slippery floors.
- ✓ Response times to lameness which are too slow.
- ✓ Poor trimming techniques and schedules.
- ✓ Genetic issues.
- ✓ The associated pressures with high incidence of high infection.



Use **Hoof-Fit** for Healthy Hooves

Hoof-Fit

Over the past 20 years, Hoof-fit has been specially developed to safeguard long-term claw health. This highly effective solution, is made from organic chelated minerals and is enriched with ALOE VERA in an alcohol base.



Poor hoof health has been proven to cost as much as £250 per dairy cow annually. Prevention can reduce Digital Dermatitis and the need for further expensive treatment.



Call Agri CareTrade today and find out how you can save money with Hoof-Fit!

Contains:

- ✓ Organic chelated zinc & copper
- ✓ Aloe Vera extract
- ✓ Alcohol
- ✓ Skin care agents
- ✓ Special binding agents to enhance adhesion.

Available in 5L liquid spray, 20L liquid bath, 250ml aerosol or 330ml gel.

Skin & Hoof Care

The ultimate PROTECTIVE BARRIER SPRAY for skin & hooves



HIGHLY EFFECTIVE



Kenofix

Kenofix is a multi-purpose protective barrier spray containing Tea Tree Oil, which simultaneously soothes and moisturises the wound or infection.

It works in 3 ways:

1. Acts as a powerful disinfectant.
2. It's a protective barrier spray which dries quickly, providing superior skin adhesion.
3. Reduces tail and ear damage from biting, saving you money.

Application

For Skin Conditions :-
1 application for 3 consecutive days.

For Hooves :-
1 application daily for 6 consecutive days.

Aerosol Spray

- ✓ Spray can be applied at all angles.
- ✓ No shaking required.

Yeast & Microbiology for Rumen Health

24

Yeast – the key to advanced ruminant nutrition

We've teamed up with Biocell Agri Limited, the yeast and microbiology specialists, to bring you a range of the very best feed additives for enhanced ruminant nutrition.

Reduce the risk of acidosis and bloat

Their product range is extensive and has been developed for dairy cows, including all high-yielding breeds. It improves utilisation of both high starch feeds and forages, whilst maintaining stable rumen pH and reducing any risk of acidosis and bloat. The products are also highly popular with intensive beef farmers and lamb finishers.

Improved feed conversion

Total Mixed Rationing (TMR) and the availability of alternative energy and protein sources in addition to grass is delivering significantly improved yields. Pure live yeast is proven to significantly improve feed conversion, enhancing both milk solids and carcass quality.

Specialist Mycotoxin Deactivators

Research has demonstrated that the full nutritional benefit of stored feed is frequently reduced through the presence of mycotoxins. Controlled preservation, aided by effective inoculation, will minimise this risk, and feeding Biocell speciality mycotoxin deactivators safeguards health whilst increasing disease resistance.

Other microbiology products

See pages 34, 37-38 for further details of our slurry, silage and anaerobic digester additives.



The Benefits of Feeding Yeast to Ruminants

How does it work?

PURE LIVE YEAST increases the number and activity of specific lactate utilising rumen bacteria to improve fibre digestion and increase the intake of food. This stimulates the production of rumen volatile fatty acids, thereby improving energy supply for extra finish and daily live-weight gain.

High starch diets often lead to a build-up of damaging lactic acid in the rumen, resulting in acidosis. Quality yeast-based products will remove the lactic acid more rapidly, creating a stable rumen pH and enabling the essential rumen bacteria to complete the effective digestion of fibre and increasing the supply of energy and protein.

With high-fibre diets, yeast improves forage intake, whilst improved rumen activity aids fibre digestion, improving feed conversion.



How Yeast Helps	Impact/Result
Increases number and activity of bacteria	Dry matter intake is increased
Improves use of energy and protein	Enhancing milk yields and quality
Maintains stable rumen pH	Reducing the risk of acidosis
Enhances enzyme activity	Stimulate the digestion of fibre
Efficiency of rumen function increased	Improving feed utilisation
Converts lactic acid in high starch diets	Increasing supply of energy and protein
Reduces methane production	Reducing waste and increasing efficiency

How yeast helps:

Increased Improvements

DAIRY Increased milk yield, butter fat and protein.	BEEF Significant increases to Daily Weight Gain. Improved carcass quality.	CALVES Improvements to gut health, faster rumen development and higher weaning weight.	LAMBS Improved Daily Weight Gain. Reduce foot rot.

The importance of including Yeast as a separate ingredient

Three key reasons to use yeast separately:

- 1 Yeast added to the meal or dairy nut may not survive the compounding process, which reduces its effectiveness.
- 2 It guarantees the feed rate per animal. Conversely, including yeast in the compound feed or blend does not.
- 3 Other products present in the compound or blend may degrade the yeast, thereby limiting its efficacy.

Achieve the very best results by taking control of the process and ensuring the correct feeding rate for each animal.



Selecting the right product:	Biocell Farm Mix	β/Se	Mycoaid	Mycocell Combi	Biocell-LAC
DAIRY	✓	✓	✓	✓	✗
BEEF	✓	✓	✓	✓	✗
CALVES	✓	✗	✗	✗	✓
LAMBS	✓	✓	✗	✗	✓

Biocell Farm Mix

Biocell Farm Mix is a proven stand-alone yeast product that increases butter-milk fat, carcass weight and quality.

- ✓ Actisaf SC47 strain of LIVE YEAST.
- ✓ Wheat Bran Carrier.
- ✓ Fully EU APPROVED.
- ✓ Suitable for Dairy, Beef and Sheep.
- ✓ Protected – dried in a rotating drum resulting in low porosity spherical particles.

Available in 12.5kg bags

Biocell Farm Mix ORGANIC also available in 12.5kg bags



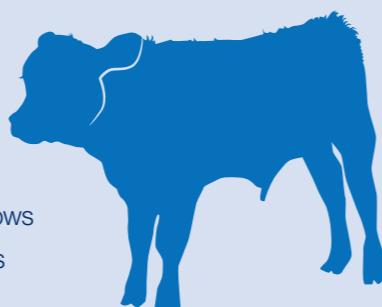
How does Biocell differ from other yeast products?

	Biocell Farm Mix	Other similar products
Highest concentration of yeast possible	10 ¹⁰ CFU/g	10 ⁸ to 2.10 ¹⁰ CFU/g
Rotating drum drying process coats particles ensuring low porosity	Yes	No
Stable under all atmospheric conditions and humidity levels	Yes	No



How to use Biocell Farm Mix:

- ✓ Introduce at anytime, and for maximum effect add to the transition diet 3 weeks before calving. This will increase dry matter intake and improve rumen function.
- ✓ Easily mixed in TMR or Biocell can be top-dressed.
- ✓ For best results, feed at the recommended daily rate:
 - 25gms Biocell Farm Mix for dairy cows
 - 20gms for followers/growing heifers
 - 10gms calves in creep

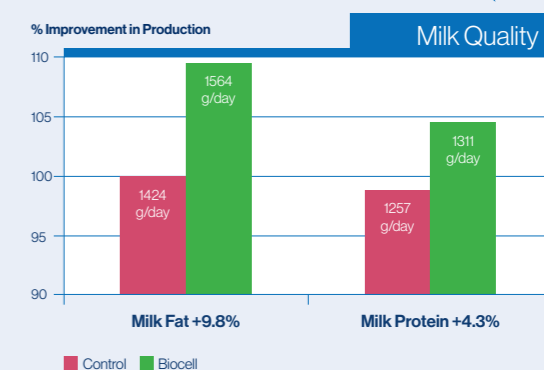
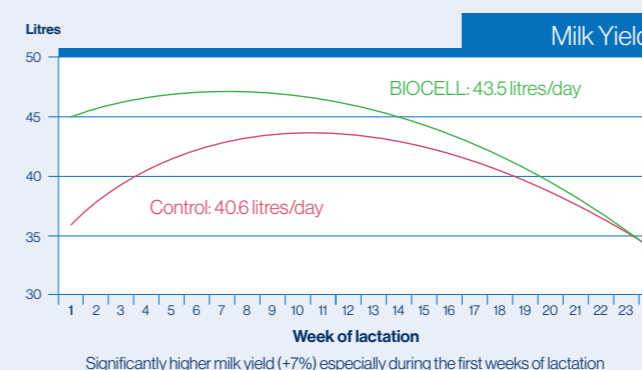


Biocell Farm Mix at Work

DAIRY Trial – New Farm, Roden, Shropshire.

- ✓ 420 Holstein Fresian cows, milked 3 times a day.
- ✓ Average yield prior to the trial was 9,500 litres.
- ✓ Total mixed ration: maize silage, grass silage, pressed pulp, waste bread, pot ale syrup, soya bean meal, rapeseed meal, nutritionally improved straw, fat, vitamins and minerals.
- ✓ Ration analysis.

"...in a market full of yeasts which may or may not work, this one worked and continues to work."
Sean Sowray
Bowes Farm
Bishop Thornton
North Yorkshire

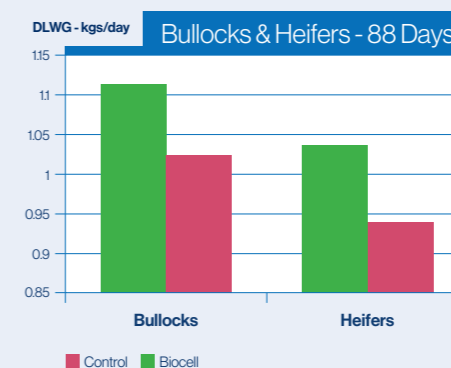
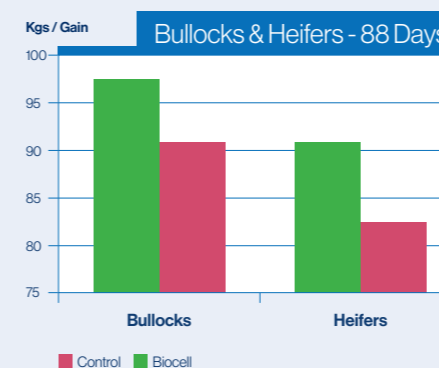


Biocell Farm Mix – pure live yeast for Growing & Finishing Cattle

BEEF Trial – Bullocks and Heifers, Robert Parker, Drumdow, Stranraer.

- ✓ A 3-month trial between Jan and April.
- ✓ Involved two groups of Bullocks (22+22) and two groups of Heifers (22+22).
- ✓ Mainly Charolais X and Aberdeen Angus X – matched for weight and breed.
- ✓ Average weaned weight of 290kgs and 325kgs at the start of the trial.
- ✓ Bullocks 8% & Heifers 10% live weight gain, even when not pushed for max DLWG.

Value of extra weight gain:
8kgs @ £3.50 deadweight = £28.00



Cost of Biocell farm mix:
6p @ 88 days = £5.28

Extra margin per head:
£28.00 less £5.28 = £22.72

Farmer Lesley Botterill buys over 600 strong steers and heifers annually, to finish and sell deadweight. **“£3.00 per head investment in BIOCELL is turning into £20.00/head quickly!”** Lesley says “...since adding Biocell to the finishing barley ration, our cattle have broken all records. The DLWG has increased on average by 0.2kgs to 1.5kgs/day/head. That’s over 100 days, and the best cattle are gaining 1.8kg/day. The feed consumption is the same as before, so BIOCELL yeast is improving feed conversion.”

Mycotoxins

What are Mycotoxins?

Mycotoxins are a group of naturally occurring chemicals produced by certain moulds. They typically grow on a wide variety of crops and foodstuffs under warm and humid conditions.

Mycotoxins can elicit a wide range of toxic responses including acute and chronic systemic effects in humans and animals.

The impact can be extensive and in the worst cases can result in death.



How to spot the presence of Mycotoxins in animals

- ✓ Reduced feed intake.
- ✓ A high incidence of digestive upsets.
- ✓ High levels of mucous in the manure.
- ✓ Increased incidence of diseases associated with depressed immune function, such as pneumonia and infertility.
- ✓ Presence of tissue oedema. Cows are very sensitive with swelling in the brisket, udder and hock. (Typically the Fusarium type of mycotoxin).
- ✓ A high rate of abortion or foetal death without obvious infection or disease.
- ✓ An unthrifty appearance with reduced milk yields, rough coat, arched back and "sad" appearance.



Nutrition

How does the Biocell Myco range of products work?

The products deactivate mycotoxins in two ways by a combined action of absorption and degradation.

MycoAid

Even the smallest quantity of mycotoxin can have a disproportionately large impact on the immune system and metabolism.

There is no such thing as a safe level of mycotoxin so the threat to animal and human health is ever-present. To reduce this risk, MycoAid should be used **preventatively**, particularly when feeding sick, vulnerable or young animals.

The live microbes found in MycoAid actively prevent pathogenic bacteria from establishing in the intestinal tract of animals. They grow even in the absence of mycotoxins, stimulating beneficial intestinal flora to improve the immune system.

Available in 12.5kg bags



*For best results, feed at the recommended daily rate:
25gms/day MycoAid &
50gms/day MycoCell/
MycoCell Combi*



MycoCell/MycoCell Combi (with added yeast)



Safeguard health & boost production.

This product is used where mycotoxins are already present. It has been developed to protect animal health by effectively deactivating mycotoxins from contaminated feed. MycoCell combines absorption and biological degradation:

- ✓ **Absorption** – Mycotoxins such as aflatoxins, ochratoxins and fumonisins are absorbed by the blend of minerals.
- ✓ **Biological Degradation** – Less or non-absorbable mycotoxins (such as fusarium toxins – Trichothecenes and Zearalenone) are degraded by specific enzymes in the product.

Available in 12.5kg bags



Did you know we can test feed samples?

Fertility & Conception



Try BioCell Farm Mix with added β C/Se for improved herd health & performance



Beta Carotene helps to increase levels of Vitamin A at key points during the year:

- ✓ **Before & after calving** - when levels of Vitamin A can be depleted by calves in colostrum.
- ✓ **Conception** - high yielding cows are more often difficult to spot because of a lack of visible bulling activity (silent heats) which can also be very short. Work over a two-year period has confirmed the positive influence of BioCell β C on improving conception rates.
- ✓ **Disease** - reduced Vitamin A, particularly after calving, dramatically increases the risk of disease. **The vast majority of Mastitis cases occur soon after calving.** The average time after calving to Mastitis diagnosis is 2 days, and cows that have a low blood vitamin A, have a 60% greater risk of Mastitis. This means that the cows with high blood levels of Vitamin A have a much lower chance of developing Mastitis than cows with low blood Vitamin A levels. Cows that develop Mastitis within 30 days of calving have, on average, a much lower level of Vitamin A in their blood.
- ✓ **Ovarian cysts** - Beta Carotene plays a key role in corpus lutea function and the reduced incidence of cysts.



BioCell MycoCell Combo+ BC Extra is suitable for all classes of dairy, beef cattle and sheep.

Available in 12.5kg bags

Selenium plays a key role in muscle function, cell metabolism and thyroid function.

We use an Organic Selenium which is more bioavailable than it's mineral counterpart. It is more easily absorbed with significant **benefits for reproduction, general health and reduced somatic cell count & risk of Mastitis.** BioCell Selenium Yeast is a cost effective way of providing the necessary selenium supplements. When the selenium is attached to a yeast protein, the digestive tract treats it as a protein, making it easier to absorb. This results in improved uptake and utilisation by the animal. The Pure Live Yeast in BioCell Farm Mix with added β C/Se improves fibre digestion and feed intake.

How to use BioCell β C/Se:

- BioCell β C/Se is easily mixed in TMR or can be top-dressed
- Individual daily feed-rate: Dairy Cows – 25g per head per day

**BioCell β C/Se can be introduced at any time, but for maximum benefit, should be added to the transition diet at least 3 weeks pre-calving, to increase dry matter intake and improve rumen function.*

Yeast Buckets

Feeding BioCell Yeast Buckets improves the utilisation of forage (fibre digestion) & reduces purchased feed costs.

BioCell Platinum Suckler Cow Yeast Buckets

For optimum cattle health, growth and fertility, a good quality mineral and vitamin drench is advisable.

- ✓ 14% magnesium
- ✓ Available with or without garlic (natural fly repellent).

Available in 20kg buckets



Effective - Economical - Labour-Saving

Additional Applications:

- Stock bulls and rams benefit from drenching one month before tupping.
- Store lambs on roots, where conventional mineral is not practical.
- Store cattle at turnout for the grazing season.
- As a stimulant to the immune system to aid recovery.

**In situations of known deficiency, i.e. copper, selenium, cobalt, Platinum drenches will provide rapid uptake and lasting effect via storage in the muscle tissue. For dairy cows and intensive cattle, there is the option of adding to the TMR Platinum In-Feed. It is recommended that it is fed over four days.*

BioCell Platinum Drench

For optimum cattle health, growth and fertility, a good quality mineral and vitamin drench is advisable.

- ✓ Rich in high quality vitamins and trace elements.
- ✓ Improved fertility & growth rates.
- ✓ Shorter calving and lambing periods.
- ✓ Increased calf and lamb vitality at birth.
- ✓ Suitable for **dairy cows, cattle, and sheep of all ages.**
- ✓ Ready-to-use formulation.

Available in 2.5 & 5L



BIOCLOSE

Helps to guard against milk fever.

BioClose prepares the cow to release sufficient calcium post-calving. Includes yeast to increase dry matter intake, improve feed conversion and reduce acidosis, while increasing yield and quality. Also includes Zeolite 4A to guard against milk fever.

Why use BioClose?

- Increases milk production over the lactation.
- Minimises (subclinical) milk fever just after calving.
- Improves transition and production, and reduces cull rate.
- Reduces the economic impact of clinical and subclinical milk fever, estimated at £14,500* on a 250 cow herd.

**cost based on 6% occurrence clinical milk fever and 60% occurrence of subclinical milk fever.*

500g per day/3 weeks = £1.40 per day.



Biocell



*BioCell BioClose with MycoCell Binder also available

SlurryCell

A VALUABLE AID TO SLURRY MANAGEMENT

- ✓ Breaks crusts
- ✓ Reduced need for stirring
- ✓ Easier and quicker to pump out
- ✓ Fewer umbilical blockages
- ✓ Lower ammonia levels in buildings
- ✓ More even growth and less grass scorch
- ✓ Reduces nitrogen loss
- ✓ Improves soil structure
- ✓ Low odour

Standard Application:
6kg is sufficient to treat 1,200,000 Ltrs (15p/1000 Ltrs)

Problem Treatment:
1kg treats 11-22,000 gall / 50-100,000 Ltrs

This is simple and effective! Simply follow the steps below to inoculate your slurry store with **SlurryCell**:

1. Calculate the capacity of store/tank/pit.
2. Inoculate with 1kg of **SlurryCell** per 200,000 Ltrs – (min: 5kgs per 1,000,000 Ltrs).
3. Mix **SlurryCell** with water to make it easy to pour in and distribute.
4. Give it a stir!**

Available in 6 x 1kg quantities



SlurryCell does not require regular 'topping up' like other treatments. The active ingredients multiply rapidly, and only require fresh inoculation when the store is emptied or large volumes are drawn off. **SlurryCell** is easy to use, labour-saving and very economical.

Biocell

Active ingredients:
Bacillus Subtilis, Bacillus Licheniformis,
Bacillus Megaterium, Bacillus Pumilus &
Bacillus Amyloliquefaciens.

- Each box contains 28 x 70g sachets for 4 week's treatment.
- Each 70g soluble sachet contains AD stimulant for 1 daily treatment.

BioCell AD

ANAEROBIC DIGESTER INOCULANT

Designed for use in anaerobic digesters to increase efficiency of gas production.

- ✓ Add daily
- ✓ Packed in soluble sachets for easy control & application
- ✓ The rate of inoculation is dependent upon the capacity of the AD plant
- ✓ Ideal temperature range for best results is 30-37°C



Calf Nutrition

Biocell Lac Improve Calf Health & Vigour

A live yeast designed to enhance calf health, vigour and vitality. Fully EU Approved, Biocell Lac is blended into a dextrose base for improved palatability and easy mixing. The solution encourages early rumen development, allowing higher levels of concentrate to be introduced into the diet, both prior to and during weaning.

- ✓ Calf course mix can be increased by up to 25%.
- ✓ Increases beneficial bacteria.
- ✓ The yeast does not degrade in the stomach.
- ✓ Unaffected by antibiotics.
- ✓ Stimulates natural immunity to prevent scours and bloats in bottle-fed lambs.
- ✓ Liveweight gain and weaning weight is increased.
- ✓ Mortality is reduced.

*Natural and free from genetically modified materials.

Available in 5kgs bucket



Feeding Rate:

Calves – 5gms per day (1 heaped scoop – 5 calves)

Lambs – 3gms per day (1 flat scoop – 6 lambs)

One bucket is sufficient for 24 calves for six weeks.

Biocell Platinum Calf Drench

At weaning:
Multivitamins and chelated trace elements for increased growth, health and disease resistance. Drench 45mls at weaning or as required for a boost to immunity and growth.

Bought-in calves should be treated on arrival.
In situations of known deficiency i.e. copper, selenium, cobalt, Platinum drenches will provide a rapid uptake and lasting effect via storage in the muscle tissue.

Available in 2.5 litres (55 calves) or 5.0 litres (110 calves)



Calf Jackets



Proven to assist young calves tolerate cold stress & improve health & growth during the winter months.

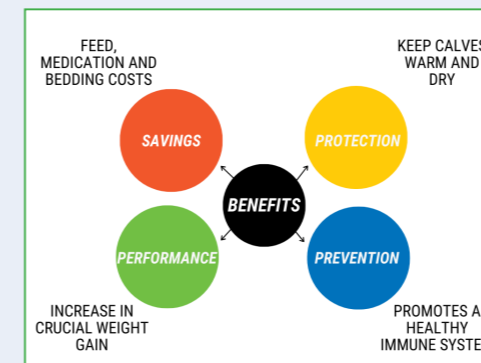


When the temperature drops below 15°C, calves need more energy to generate body heat and have less for growth and combating disease.

A calf requires 2% more energy for every 1°C below the thermo-neutral zone, therefore at freezing point (0°C) a calf requires 20% more milk/feed just for maintenance.

Dairy breed calves do not have enough body fat to maintain their own body temperature in cold weather. Feed is often limited by number of feeds per day and the amount given per feed. Keeping the calf warm therefore is the most cost effective way of maximising the feed given.

Calf jackets keep calves warm in cold weather so they use their energy to grow rather than to stay warm. They are most often used for calves from birth to 4 weeks old. With the use of calf jackets you can make significant savings on feed, medication and bedding costs, by focusing the calves energy on growth rather than keeping warm.



In turn, this can reduce the risk of pneumonia and scours from chills and draughts.

Calf scour is the most common cause of death in calves. It accounts for nearly 30% of deaths in calves less than one month old. Pneumonia is the most common cause of death in cattle of all ages over one month old. The use of calf jackets from birth can have a significant impact on the health of your animals for the duration of their lives.

If used correctly, calf jackets can save you money on feed, medication, increase live weight and reduce deaths due to scours.

The snug-fitting design ensures your calf remains warm and dry to support weight gain in those crucial first weeks.

- ✓ Waterproof & breathable.
- ✓ Anti-bacterial lining promotes healthy immune system.
- ✓ 200gm polyfill keeps calf warm and comfortable.
- ✓ Adjustable belly and leg straps keeping clear of navel, with easy to use plastic clip.
- ✓ Safely machine washable at 40°C.

Available in sizes S, M, L & XL

X Large: Holstein/Beef - 32"/80cm
Large: Holstein - 28"/70cm
Jersey: 24"/60cm
Small/Twin: 22"/56cm



Supports crucial weight gain, promotes healthy immune systems & significant savings on feed & medication.

The high performance inoculant for
high performing cows

BIO-SHIELD

Forage Preservative and Stabiliser

BIO-SHIELD is a feed preservative based on the best food preservative technology, and is particularly effective at the higher pH associated with dry feeds which are prone to heating and spoilage.



The cause of the heating is usually a mixture of moulds and wild yeasts. These spoilage organisms can only grow in the presence of air, so haylage or straw bales, and the silage clamp face or mixer wagon are the ideal places for them to thrive, providing food, oxygen and warmth.

- ✓ Each 5kg bucket of BIO-SHIELD treats 50 tonnes of straw or haylage, or 200m² of exposed clamp face
- ✓ Active ingredient: Potassium Sorbate
- ✓ Dilute with water and spray as required via knap-sack sprayer or mixer wagon.



REDUCES SPOILAGE, WASTE & LOSSES

THE PROVEN FORMULA

Lactic acid producing bacteria: 50,000,000,000 cfu/g
 Pediococcus acidilactici NCIMB 30005 1k21013
 Lactobacillus plantarum DSMZ 16627 1k20749
 Lactobacillus fermentum NCIMB 30169 1k20747
 Lactobacillus brevis DSMZ 16680 1k20745

Proven to reduce spoilage, waste and losses,
by increasing the speed of fermentation.

- ✓ Reduces aerobic spoilage in high dry matter grass, whole crop & maize silage.
- ✓ Reduces heating.
- ✓ Inhibits spoilage bacteria and mycotoxins from developing.
- ✓ Minimises clamp losses.
- ✓ Available for liquid application – one tub per 50 tonnes of silage.
- ✓ Also available for granular application – 20kg bag treats 50 tonnes of silage.

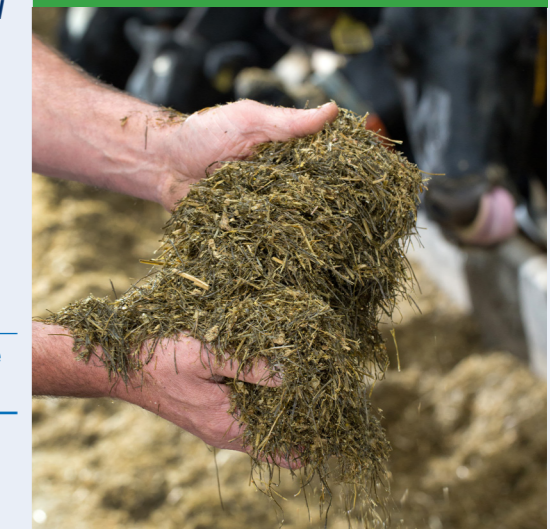
“FirstChoice is brilliant to mix and so simple to use, we were very impressed. Through a difficult silage making season, we have been able to make good silage, which is well fermented and stable.” David & Chris Mattinson

“Using FirstChoice on my grass silage over the years, whether high or low dry matter, has shown its qualities by the way the cows eat all the silage to the bottom of the feeder. Previous additives didn’t control the silage at feed-out and the waste was very costly. My cows produce 9 litres/day from silage – a real saving on purchased feeds.” Phil Roberts

Firstchoice silage inoculant is packed in 1L pots which are used to pre-mix the live bacteria, ensuring purity and making mixing easier.



Liquid application: 2L per tonne
 Ultra-low volume: 50-500ml per tonne
 Granular application: 400g per tonne



Oils & Greases

"NOW STOCKING A WIDE RANGE OF OILS & GREASES for around the farm!"




Servol Milking Machine Oil 68

Available in 5L, 20L or 200L



Blue Lithium Complex Grease

Available in 400g, 500g 12.5kg pail

AdBlue



Fuel additive for use on all diesel vehicles.

Available in 10L, 20L, 205L barrel & 1000L IBC

Consumables

Did you know we stock...



Rotary Pump for oil barrels



Dispensers

- ✓ 200L barrel pump
- ✓ Drum tap

Milk Filter Socks & Sleeves

- ✓ Complete range of milk socks & sleeves
- ✓ Available in a range of sizes



Paper & Soap Dispensers

Paper Products

- ✓ Dairy Wipe - universal paper
- ✓ Udder Wipe - our premium brand, softer and more absorbent
- ✓ 3ply Toilet Roll (40 pk)



"Call for Samples!"



Consumables

Gloves

A range of high quality T-Grip & standard Nitrile gloves

- ✓ Gloves in all sizes
- ✓ Standard and long cuff lengths
- ✓ Over-sleeves also available



Laundry Detergent

- ✓ Bio & Non-Bio Washing Powder
- ✓ Disinfecting Detergent



Hand Hygiene

- ✓ Unperfumed Soap & Sanitiser
- ✓ Dispensers

Tail Tape

- ✓ Variety of colours
- ✓ 50m roll



Brushes

An extensive range of brushes, including yard & platform brushes.

- ✓ Tank and general purpose brushes
- ✓ Mops & squeegees
- ✓ Waterflow broom with extending handle



Spray Marker

- ✓ Quick dry
- ✓ Variety of colours
- ✓ 500ml



Dust Masks

- ✓ AIRKIT Comfort P2 (pk 10) & P3 (pk 5) Valved Disposable Respirators





GALLAGHER ESSENTIALS



UNIQUE IN THE MARKET
7-YEAR WARRANTY
ON ALL ENERGIZERS



GALLAGHER Fencing

- SOLAR & BATTERY POWERED ENERGISERS
- WIDE VARIETY OF PORTABLE POSTS
- GEARED REELS
- BRAIDED ROPE / INSULATED TAPE



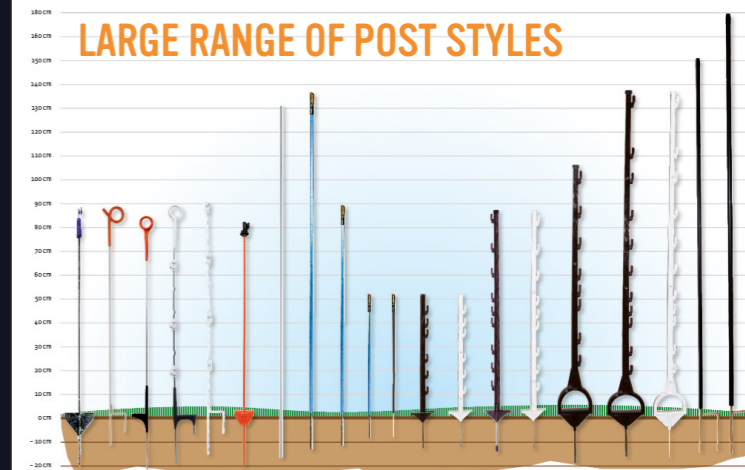
TUMBLE WEED SYSTEM

One person can move a whole fence within a matter of minutes using the tumble wheels. The strip grazing system reduces the grazing cycles and increases the yield.

Light and easy to move, Gallagher also has portable posts in various types and sizes, including plastic posts, fibreglass posts and metal posts. They are all light-weight and easy to move.

For example, we have plastic posts with wire holders so you do not need any loose insulators. The tread-in post has been developed specifically for portable horse fencing. You can take 50 of these smoothly finished posts in one hand when you fence off your pasture.

LARGE RANGE OF POST STYLES



A24 RAT AND MOUSE TRAP

AUTOMATIC, POISON-FREE AND HUMANE



WHAT ARE THE BENEFITS?

AUTOMATIC

The A24 rat and mouse trap works up to 24 times with one CO2 canister, and is supplied with a bait cartridge that automatically dispenses the bait for up to 6 months. The trap is supplied with a digital strike counter that shows how often the trap has been activated.

SAFE

Humane, effective and safe to use. These traps have been designed to attract rodents and nothing else.

HUMANE

Traps kill the animal immediately, without suffering. They have been tested independently, and comply with the strictest international standards.

EASY TO USE

Easy to install and set up. Comes with a mount that is easy to attach to a tree trunk or a wooden post. A trap stand can be bought separately if your preference is to put the trap on the ground.

CONSTANT CONTROL

As the trap can be triggered 24 times per canister and resets itself, there is no need to keep checking it. Setting it once is sufficient.

HARD WEARING

Traps are extremely durable. Suitable for indoor and outdoor use.

DISPOSAL

Other animals, such as birds of prey and cats, take the dead animals away. As it does not involve poison, it does not end up in subsequent chains of the ecological system. A cat or bird of prey will not become ill by eating the dead animal.

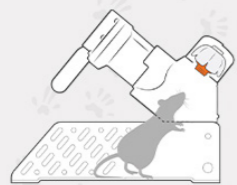


More info

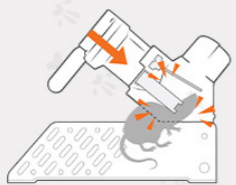


Automatic Quick-Kill System

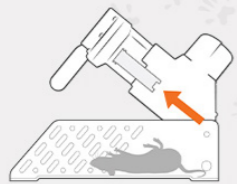
The automatic home trapping kit resets itself 24 times per CO2 canister, allowing you to fully harness the power of our rat and mouse trap



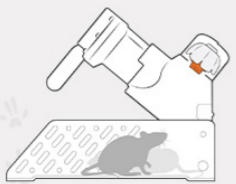
Sniff sniff
Lure attracts pest into the trap



Kapow!
Pest moves trigger, firing the trap



Auto-reset
The pest drops as the trap resets itself



Sniff sniff...
Lure continues to attract pests for constant control



Scavenged



NEW HANDCARE RANGE



SCRUBB industrial hand care products provide the complete solution for skin protection before, during and after work. Formulated with natural ingredients to protect, cleanse, and condition SCRUBB products are ideal for industrial settings and anywhere heavy-duty skincare is a priority.

SCRUBB
SO YOU DON'T HAVE TO.

Protection for working hands



Heavy duty cleaning products for vehicles, machinery, plant & equipment.

Waterproofs & Wellies

Neoprene fabric is found to be resistant to cows milk, cows urine and muck and most animal safe chemicals. This makes Monsoon's neoprene garments an excellent choice for the farmer and veterinarian alike.

- High Comfort Durability
- Gusset neck with velcro fastening
- Breathable
- Flexible
- Front pocket
- Elasticated sleeves

Swampmaster No-Sweat Stormgear Waterproof Range

- ACTIVE-X™ Stretch 4-way Stretch fabric for great freedom of movement
- Class 4 Water Penetration
- Class 2 Breathability
- Anti Fungal Treatment
- Machine Washable



Dairy Apron

Dairy Gown

Monsoon Pro-Dri Parlour Jacket



SCAN ME



> ASK US FOR A COPY OF OUR WORKWEAR BROCHURE OR SCAN THE QR CODE ABOVE!

Boots

Xpert Warrior SBP Safety Laced Boot

Available in Brown or Black



The Xpert™ Warrior Steel Toecap Safety Leather Work Boot is built for ultimate protection and comfort. With advanced heel and ankle support, a Comfort-X™ Open-Cell Insole, and PU/TPU Outsole and Scuff Cap, the Xpert™ Warrior is designed for comfort in most hard work environments.

- Complete Protection – Protective Steel Toecap and Midsole.
- Quality Leather – High Quality and Durable Waxy Leather Upper.
- All-Day Comfort – With Comfort-X™ Open-Cell Insole for Superior Comfort and Durability.
- Xpert™ Scuff Cap for Added Durability and Protection.
- Dual Density PU/TPU Hardwearing Outsole.
- Padded Collar & Tongue for Optimum Comfort.
- Xpert™ Support Structure providing Heel and Ankle Support.

Xpert Defiant SBP Safety Dealer Boot

Available in Brown or Black



The Xpert™ Defiant Safety Dealer Boot is a favourite within the farming, construction, and industrial sectors. Unrivalled for comfort and durability, the Xpert™ Defiant is a tried-and-trusted Steel Toecap Pull-On Chelsea Boot that's also engineered with a steel anti-penetration midsole for even greater foot protection.

- Complete Protection – Protective Steel Toecap and Midsole.
- Quality Leather – High Quality and Durable Waxy Leather Upper.
- All-Day Comfort – With Comfort-X™ Open-Cell Insole for Superior Comfort and Durability.
- Xpert™ Scuff Cap for Added Durability and Protection.
- Dual Density PU/TPU Hardwearing Outsole.
- Xpert™ Support Structure providing Heel and Ankle Support.

Xpert Heritage Trader SBP Safety Boot

The Xpert™ Heritage Trader Steel Toecap Safety Dealer Boot is seriously one of the hardest wearing boots on the market. Crafted with premium components and Xpert™ IQ Technologies, this pull-on, heavy-duty, Goodyear Welted Safety Dealer Boot is engineered to work as hard as you do.



- Complete Protection – Protective Steel Toecap and Midsole.
- Premium Quality Leather – Top Layer Genuine Cowhide Leather Upper.
- Superior Construction – With Tough-X™ Goodyear Welted Construction for Increased Durability.
- All-Day Comfort – With Comfort-X™ Shock Absorbing PU Footbed for Optimum Comfort.
- Premium Double Elastic Gusset.



KIDS RANGE

TOP 10 TIPS!

49



Can you introduce one or more of these steps to improve your Mastitis management and milk quality?

TIPS	SOLUTIONS
1 A clean environment will reduce mastitis-causing bacteria.	Clean parlour and equipment with Kenosan / BioSafe / Viroid / Kenolit
2 Fore-strip teats to encourage milk let-down and increase milk flow rate.	Pre-Strip Cup
3 Clean teats before milking to prevent bacteria getting into the teat canal during the milking process. Use proven, effective pre-milking teat dips to reduce bacteria on teats.	Pure Foamer Kenopure
4 Dry teats (after pre-dip) before milking. Clusters require dry teats in order to have the best suction. If teats are not sufficiently dry, chapping, pinching or bleeding may occur, leaving the cow further susceptible to Mastitis-causing bacteria.	Blue / Green Paper
5 Conduct monthly milk tests to detect early signs of subclinical Mastitis. Use the California Milk Test method and test-pallet to assess the level of somatic cells present in the milk.	KenoTest
6 Prevent contamination: <ul style="list-style-type: none"> • Use gloves • Sterilise clusters between cows • Milk infected cows last to reduce spread of Mastitis 	Gloves Peracetic acid
7 Use a post dip to condition and disinfect the teat until it closes.	Pure-Dipper Kenostart / Kenomix / Kenocidin
8 Maintain good teat skin condition – chapped, cracked and bleeding teats should not be milked. Sooth and cool inflamed, dry or chapped teats/udders.	Mint Cream
9 Encourage cows to keep standing immediately after milking (+30mins) e.g. give cows access to fresh feed, whilst sphincter is open and at most risk of developing Mastitis.	Biocell range
10 Maintain clean and dry living conditions. Use lime in cubicles after bedding cubicles to reduce bacteria in the area that the udder sits on.	Kenolit Hydramix Lime

New Distributor for:



Livestock handling and housing equipment, equestrian stabling, steel fencing and shelters.

Brochure >>>



Our Green Credentials

We are fully committed to raising standards in the environment.

Our DairyTeam is fully committed to sourcing high quality products which improve productivity and yield whilst enhancing animal welfare and safe-guarding the environment.

We stock a wide and growing range of eco-friendly products, many of which are Chlorine, Phosphate & Metal FREE. All of which are becoming critical to good farming practice, whether mandated or not.

These products are designed to support the drive for a more sustainable world; our legacy to future generations.

CALL US:
 NI: 028 9446 2266
 or email: sales@agricaretrade.com





Agri Care Trade

Head Office:

Ensign Building
Rathenraw Industrial Estate
Greystone Road
Antrim
BT41 2SJ

T: 028 9446 2266

E: sales@agricaretrade.com

W: www.agricaretrade.com



Find us on
Facebook

